

PROACT.®

REFERENCE : PA1003

SIZES : S_M_L_XL_XXL_3XL

COMPOSITION :

Main fabric : 4 Way Polyester / Elastane 95/5 - 155 95% polyester / 5%elastane

Fabric 2 : Polyester blended jacquard-140 For outside knee yoke 100% polyester

Mesh : Polyester mesh - 75 For inside knee yoke & small pocket sacks 100%polyester

WEIGHT :

Main fabric : 155 gsm

Fabric 2 : 140gsm

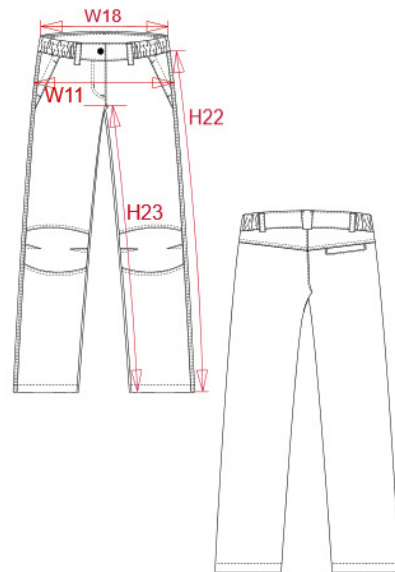
Mesh : 75 gsm

TECHNICAL DETAIL :

WR grade 3-4,antistatic treat.

ARTICLE WEIGHT :

265 gr/pc



| DESCRIPTION |
|---|
| Français : Pantalon léger femme |
| English : Ladies' lightweight trousers |
| Nederlands : Lichte damesbroek |
| Deutsch : Leichte Damenhose |
| Español : Pantalón ligero de mujer |
| Italiano : Pantaloni donna leggeri |
| Português : Calças leves de senhora |

| COLORS | PANTONE SERIGRAPHIE |
|--------|---------------------|
| Black | Black |

| MEASUREMENT | | | | | | |
|--|-------|-------|-------|-------|-------|-------|
| Description | S | M | L | XL | XXL | 3XL |
| W18E (L) 1/2 taille élastiquée/ 1/2 elasticated | 35 | 37 | 39,50 | 42 | 44,50 | 47 |
| W11 (L) 1/2 bassin / 1/2 hip width | 47 | 50 | 53 | 56 | 59 | 62 |
| H22 (L) Longueur côté / Side length | 99 | 100 | 101 | 102 | 103 | 104 |
| H23 (L) Longueur entrejambe / Inside leg length | 80,90 | 81,20 | 81,40 | 81,70 | 82 | 82,25 |

| CARE LABEL |
|------------|
| |

| PACKING | |
|---------|---|
| Box | 20 pcs / box S => L:60cm W:40cm H:20cm GW:6.5kg NW:5.5kg M => L:60cm W:40cm H:20cm GW:6.7kg NW:5.7kg L => L:60cm W:40cm H:20cm GW:7.1kg NW:6kg XL => L:60cm W:40cm H:20cm GW:7.4kg NW:6.3kg XXL => L:60cm W:40cm H:20cm GW:7.7kg NW:6.6kg 3XL => L:60cm W:40cm H:20cm GW:8.1kg NW:7kg |