

KARIBAN

REFERENCE : K532

SIZES : XS_S_M_L_XL_XXL

COMPOSITION :

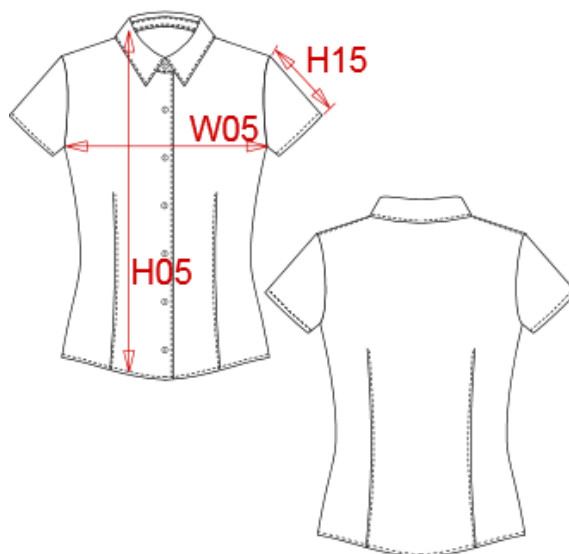
Main fabric : Cotton / Elastane poplin 97/3 - 140 97%cotton / 3%elastane

WEIGHT :

Main fabric : 140 gsm

ARTICLE WEIGHT :

190 gr/pc



DESCRIPTION	
Français :	Chemise femme manches courtes
English :	Ladies short sleeve easy care stretch shirt
Nederlands :	Dames blouse met korte mouwen
Deutsch :	Pflegeleichte damen kurzarm stretch-bluse
Español :	Camisa de manga corta para mujer
Italiano :	Camicia donna maniche corte
Português :	Camisa de senhora manga curta em stretch e tratamento fácil

COLORS	PANTONE SERIGRAPHIE
White	White
Black	Black
Zinc	447C
Light blue	544C
Navy	296C
Wine	7645C

MEASUREMENT							
Description	XS	S	M	L	XL	2XL	
W05 1/2 largeur poitrine / 1/2 chest width	44	46	48	50,50	53	55,50	
H15 Longueur manche / Sleeve length	14	15	16	17,10	18,25	19,35	
H05 Hauteur totale / Total height	63,80	65,35	66,85	68,75	70,60	72,50	

CARE LABEL					

PACKING	
Box	12 pcs / box XS => L:52cm W:34cm H:20cm GW:3.00kg NW:1.70kg S => L:52cm W:34cm H:20cm GW:3.20kg NW:1.90kg M => L:52cm W:34cm H:20cm GW:3.40kg NW:2.10kg L => L:52cm W:34cm H:20cm GW:3.60kg NW:2.30kg XL => L:52cm W:34cm H:20cm GW:3.80kg NW:2.50kg XXL => L:52cm W:34cm H:20cm GW:4.00kg NW:2.70kg