

KARIBAN

REFERENCE : K486

SIZES : 6/8_8/10_10/12_12/14

COMPOSITION :

Main fabric : Brushed Combed Cotton / Polyester fleece 80/20 - 280 80%cotton / 20%polyester

Fabric 1 : Cotton single jersey (22/1) - 180 For hood lining, necktape. 100%cotton

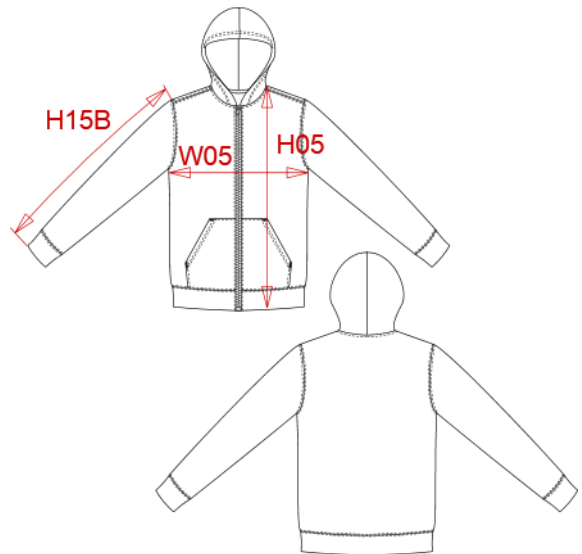
WEIGHT :

Main fabric : 280 gsm

Fabric 1 : 180 gsm

ARTICLE WEIGHT :

360 gr/pc



DESCRIPTION	
Français :	Sweat-shirt zippé capuche enfant
English :	Kids' full zip hooded sweatshirt
Nederlands :	Kindersweater met rits en capuchon
Deutsch :	Kinder-Hoodie mit Reißverschluss
Español :	Sudadera con capucha y cremallera contrastada de niños
Italiano :	Felpa bambino con cappuccio full zip
Português :	Sweatshirt de criança com capuz e fecho

COLORS	PANTONE SERIGRAPHIE
Black / Fine grey	Black / 877C
Navy / Fine grey	296C / 877C
Black / Red	Black / 200C
Black / Yellow	Black / 1235C
Red / White	200C / White
Oxford grey / Navy	- / 296C
Light royal blue / Yellow	653C / 1235C

MEASUREMENT						
Description	6/8	8/10	10/12	12/14		
H05 Hauteur totale avec BC / Total height with rib	49,50	54,50	59,50	64,50		
W05 1/2 largeur poitrine / 1/2 chest width	39	42	45	48		
H15B Longueur manche avec poignet / Sleeve length with cuff	47	51	55	59		

CARE LABEL				

PACKING	
Box	20 pcs / box 6/8 => L:58.1cm W:37.8cm H:26.7cm GW:7.35kg NW:6.45kg 8/10 => L:58.1cm W:37.8cm H:26.7cm GW:8.05kg NW:6.95kg 10/12 => L:58.1cm W:37.8cm H:32cm GW:9.60kg NW:8.50kg 12/14 => L:58.1cm W:37.8cm H:42cm GW:11.20kg NW:10.10kg